



A state of the art PC based liquid pigment dispensing system for pre-mix concrete plants





kaleido

The Kaleido liquid pigment dispensing system provides concrete producers with the ability to automatically blend and dispatch hundreds of colours on-site at the push of a button. The system assists in streamlining coloured concrete production while minimising workplace health and safety issues.

Utilising equipment and pigments from the colour specialist for optimum production and marketing results.

When you invest in the Kaleido system and the CCS high tinting strength liquids, you enjoy the benefits of excellent equipment along with the great marketing and logistical support that CCS provides.

All CCS liquid pigments have been specially formulated for high tint strength, excellent mixing ability and long term UV resistancy when placed. Unique additives ensure the liquid pigment is at the target viscosity for accurate blending and long term storage stability.

At CCS, we pride ourselves on providing superior support and service to our pre-mixed concrete customers - enabling you to grow the coloured component of your business. The Kaleido system and associated liquids are another example of this.

Once installed, pre-mix concrete producers can deal locally with CCS to purchase both the liquid colours and any necessary additional components for the Kaleido system.



The white pigment 'Kaleido Aspen' at the exact dose rate, ensures lighter colours are creamier.

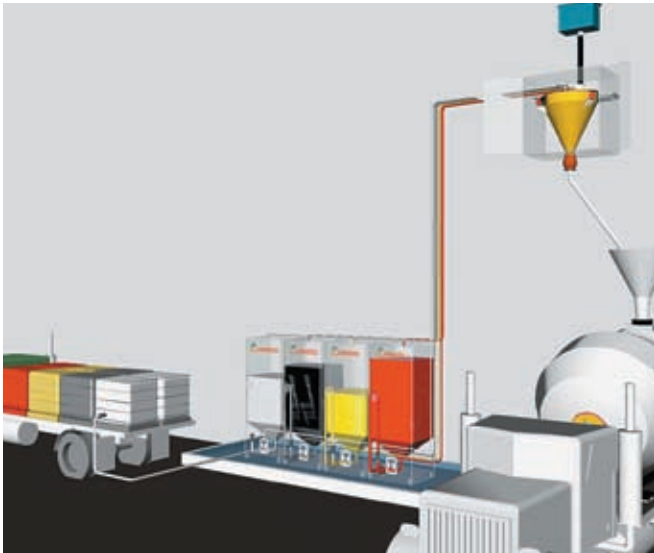


Designed and manufactured in Australia for Australian conditions.

The Kaleido system has been designed to meet the requirements of Australian concrete plants and includes a number of innovative features. All of these unique features are aimed at making liquid colour batching simple, quick and more cost effective.

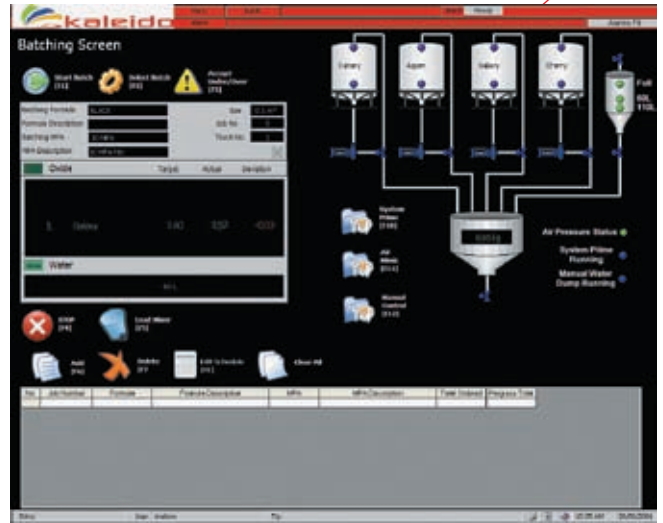
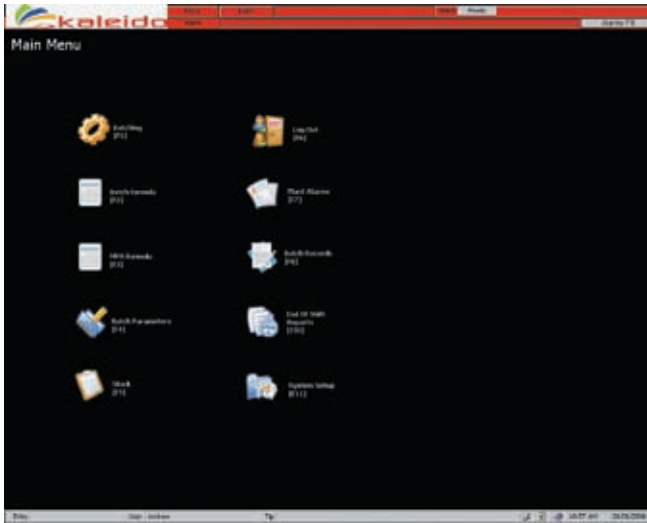
A key advantage of the system is its modularity - allowing each component to be fixed into a number of various configurations depending on space and access at your pre-mix plant.

Each Kaleido colour canister can hold up to 2,300 litres of liquid pigment. This large capacity means you can cater for high volume projects on demand and your batchers won't have to constantly monitor and order refills.



Simplified Windows operating system

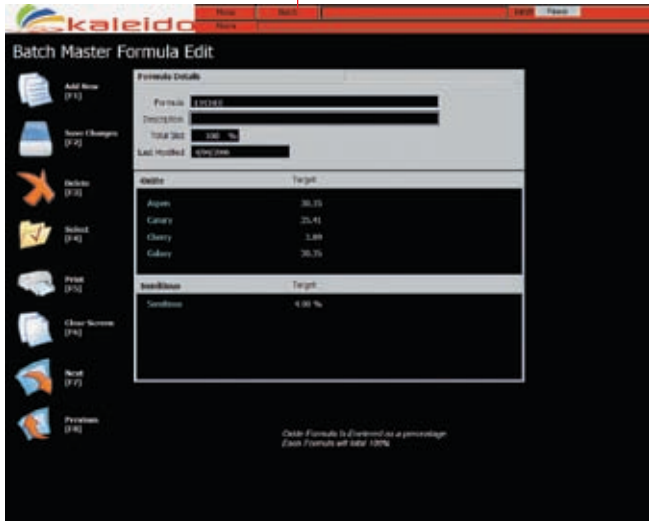
Kaleido provides an interface between the batch operator and the colour mixing process through a user-friendly, Windows PC based operating system. The system is connected wirelessly to a Programmable Logic Controller (PLC) which in turn controls the operation of all aspects of pigment batching, purging and replenishment.



The easy to use Kaleido software allows the operator to enter the desired colour or recipe, control the various valves and devices and access reports on colours, batches and stock levels, all at the touch of a button.

The system allows the operator to schedule batches and view each stage of the batching process whilst in progress.





Operators can choose a pre-programmed colour, create colours and easily modify existing formulas or recipes. Real time actual weights and target weights are displayed.



Kaleido maintains a record of the current stock levels of each colour and provides both daily and monthly reports.



Back-up training and support

CCS technical and engineering staff will assist your operators in making a quick transition from installation to system operation.

A comprehensive, user friendly system manual provides an easy reference point for your operators if an issue needs immediate resolution.



Up to 400 colours can be stored within Kaleido and the system comes pre-programmed with the recipe for each of the CCS standard colours.



Replenishing of the liquid storage containers can be done quickly and cleanly. The operator connects the canister in-feed hose to the IBC and then uses the system pump to transfer the liquid to the canister. All of this occurs within 15 minutes and takes place without the need for a forklift.



The coupling units include interlocking design features which effectively prevent pigment from flowing out of the containers when disconnected. Colour identifier buttons are also included to ensure operators connect to the matching colour replenishing IBC.



Both fast and accurate

Fast speed and slow speed pumps are used in combination to deliver speed and accuracy in batching procedures. This dual pump configuration allows concrete producers to batch small loads accurately, without sacrificing speed when large pigment doses are necessary.



As a secondary back-up measure, pigment storage containers and delivery hoses are supplied in a semi-transparent material to allow operators to immediately identify the colour of the contents and the quantity held within.



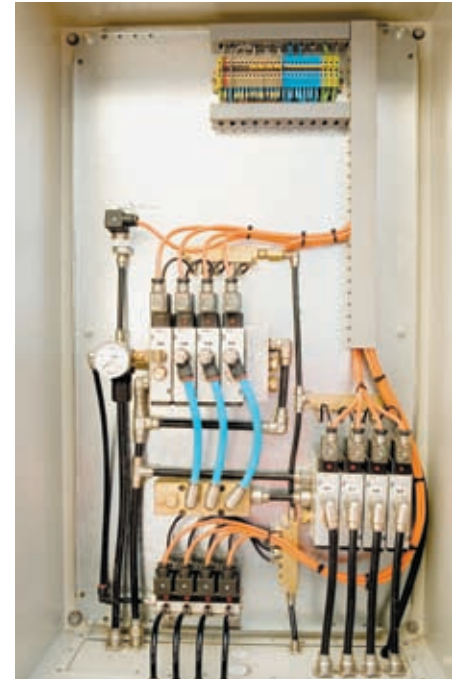
Self cleaning dual option water tank

The Kaleido system comes complete with a dual option water tank.

The control system dictates the quantity of water that is necessary to effectively flush the weigh hopper.

This 'flush' water is added to the same load that received the pigment.

As the water quantity is known, the concrete batcher can scale back the addition of water to ensure correct water cement ratios are achieved.



Robust & reliable electrical system

The Kaleido electrical control panel has been designed for robustness and reliability. The system consists of quality Norgen air valves powered by an Allen Bradley PLC (Program Logic Controller). All switches and electrical relays are readily available in Australia and easily serviceable. The system will automatically shut down if there is a power failure or the water supply is compromised.



The 300 litre capacity weigh hopper is mounted on three load cells to provide extremely accurate pigment batching tolerances.

The internal weigh hopper walls are coated with a special film to ensure that each pigment batch is fully discharged.



An emergency stop button is provided to override all controls and operations if or when the situation demands it.

Brilliant colours outstanding results

At Concrete Colour Systems we constantly strive to provide superior logistical, technical and marketing solutions relating to the supply of coloured concrete to the pre-mix concrete, pre-cast and masonry industries in Australia.

The Kaleido system and associated high tinting strength liquid concentrates are another key component of our company's service offering.



Concrete Colour Systems

A division of River Sands Pty Ltd

Factory 683 Beenleigh Redland Bay Road,
Carbrook, Brisbane 4130, Australia

Sales and Technical Enquiries

Sydney Phone 02 9756 1711 Fax 02 9677 1352

Brisbane Phone 07 3287 6444 Fax 07 3287 6445

Melbourne Phone 03 9311 9225 Fax 03 9311 9445

Perth Phone 0423 023 164

Toll Free Australia Telephone 1800 077 744

Email cccolour@riversands.com.au

www.concretecoloursystems.com.au

